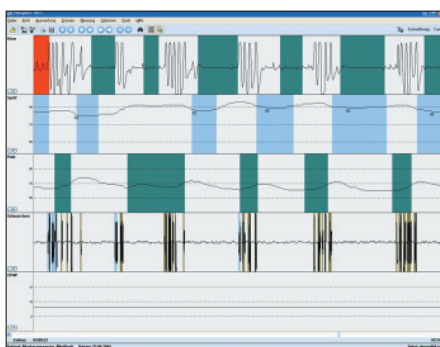


SleepDoc MiniPorti – Sleep Diagnosis In Easiest Way

5 Channels

- **Flow**
(by means of flow prongs and pressure sensor) even during CPAP therapy
- **Oxygen saturation SpO2**
HP finger sensor
- **Pulse** HP finger sensor
- **Snoring**
(microphone in the basic unit, sound recognition via flow prongs)
- **CPAP / BIPAP**
integrated pressure sensor to obtain absolute pressure, during therapy for direct connection to mask or pressure hose



Darstellung der 5 Kanäle am Bildschirm

Flexible Software

- Fast, full automatic evaluation, diagnosis and report generation
- Manual editing possibility
- Flexible parameter control by the user
- Quick, comfortable generation of doctors letter
- Integration into network (Windows XP/2000, Vista ...)
- Facility for data transfer by Internet



**Software
inclusive**

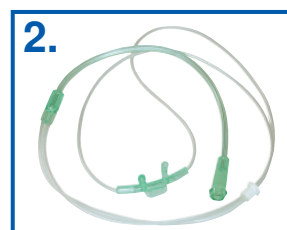
Screening with MiniPorti There's nothing more simple!

1. put on the strap with the MiniPorti.
2. put on the flow prong.
3. put on the finger sensor.

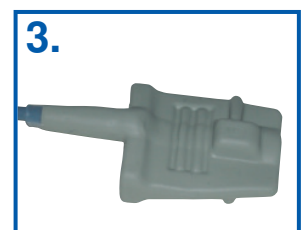
And screening can start immediately ...



SleepDoc MiniPorti with fixed strap



Inexpensive flow sensor for recording respiration and snoring



The reusable HP SpO2 sensor finger cuff is sturdily made, extremely long living and comfortable for the patient.

3 Considerable Advantages

■ Economical

Low running costs (only 1 EUR per measurement). Inexpensive sensors. Marginal time and effort for briefing and diagnosis. Lifelong guarantee extension when regularly maintained.

■ Functional

High-resolution signals up to 5 channels. Rechargeable battery, battery charger and shoulder bag included.

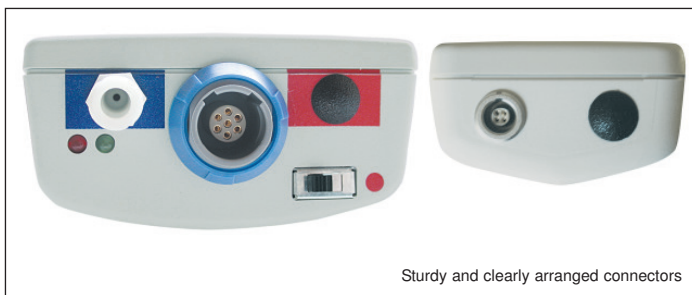
■ Easy to use

Simple operation for patients and nurses. Only 2 sensors to fasten (flow prong, finger sensor). All other sensors integrated in the device.



Included In Delivery

- MiniPorti Basic Device
- Shoulder bag, cushioned
- Carrying strap
- Finger sensor HP, reusable
- Velcro wrist strap to fix finger sensor cable to the wrist
- Flow prongs
- Adapter hose for flow prong
- Cable for data transmission
- Rechargeable battery with built-in semiconductor fuse
- Storage battery charger
- CPAP adapter hose
- Recording and evaluation software
- Manual
- Short manual for patient
- Carrying case



Technical Data

(Date 05/07)

Dimensions	30.5 mm x 62.7 mm x 140 mm (M x W x L) without bag
Weight	140 gr including storage battery, without bag
Casing	Metalised plastic (polystyrol, UL 94HB)
Temperature range	+15°C – +45°C
Humidity	40% – 80%
Storage medium	MultiMedia Card
Storage capacity	Several days
Fault indicator	2 LEDs on front of instrument, additional online mode
Power supply	Rechargeable NiMH storage battery 3.6 V – 750mAh with built-in semiconductor fuse
Charger	Plug-in charger with quick-charge function using PVD and automatic switchover to maintenance charge and programmable discharge function to minimise memory effect
Output	Serial interface with D-sub 9-pin cable for data transfer
Power consumption	approx. 45 mA
Online operation	For online operation with a patient, a fibre-optic link to the PC is essential (available as an option)

Parameters Recorded

Respiratory activity:	Differential pressure measurement via flow prong (with adaptor also during CPAP therapy)
Breathing sounds:	Phonometric transducer via flow prong
CPAP:	Differential pressure measurement directly on CPAP mask Measurement range: 0 cm H2O – 45 cm H2O ± 5%
SpO2/Pulse:	Built-in pulsoximeter (option) Measurement range SpO2: 80% – 99% ± 2% SpO2 60% – 79% ± 4% SpO2 Measurement range pulse: 50 1/min – 150 1/min ± 2% Finger sensor: rubber-coated thimble finger sensor